

USER MANUAL

CASH DRAWER OPENER JP-8005U

This equipment has been tested and found to comply with the limits for Class A digital device. Pursuant to Part 15 of the FCC Rules. These limits are designed to provide reasonable protection against harmful interference in a residential installation. This equipment generates, uses, and if not installed and used in accordance with the instructions may cause harmful interference will not occur in a particular installation.

If this equipment does cause harmful interference to radio or television reception, which can be determined by turning the equipment off and on. The user is encouraged to try correct interference by one or more of the following measures:

- Reorient or relocate the receiving antenna.
- Increase the separation between the equipment and receiver.
- Connect the equipment into an outlet on a circuit different from that to which the receiver is connected.
- Consult the dealer or an experienced radio/TV technician for help.

This booklet is available from the U.S. government Printing Office, Washington, DC 20402, Stock NO.004-000-00345-4.

Caution

Any changes of modifications not expressly approved by the grantee of this device could void the user authority to operate the equipment.

Operation is subject to the following two conditions:

- (1) This device may not cause harmful interference.
- (2) This device must accept any interference received including interference that may cause undesired operation.

I. Instruction of JP-8005U USB Cash drawer opener

1. General description

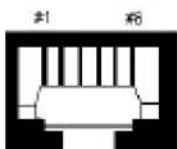
The JP8005U USB cash drawer opener is designed to open 24V cash drawers by sending any character through USB interface.

2. JP-8005U USB LED statuses

Flash: normal operation

ON (RED LED): normal operation

3. JP-8005U USB pin out



#2, #5: By Trigger

#4: Default 24V

4. JP-8005U USB Power requirements

An external power supply may also be used.

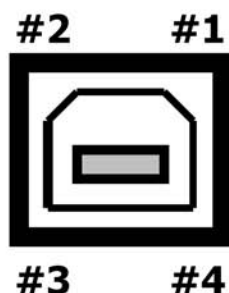
Power plug

Inside: GND

Outside: +12V



USB port:



USB

#1: VCC

#2: -DATA0

#3: +DATA0

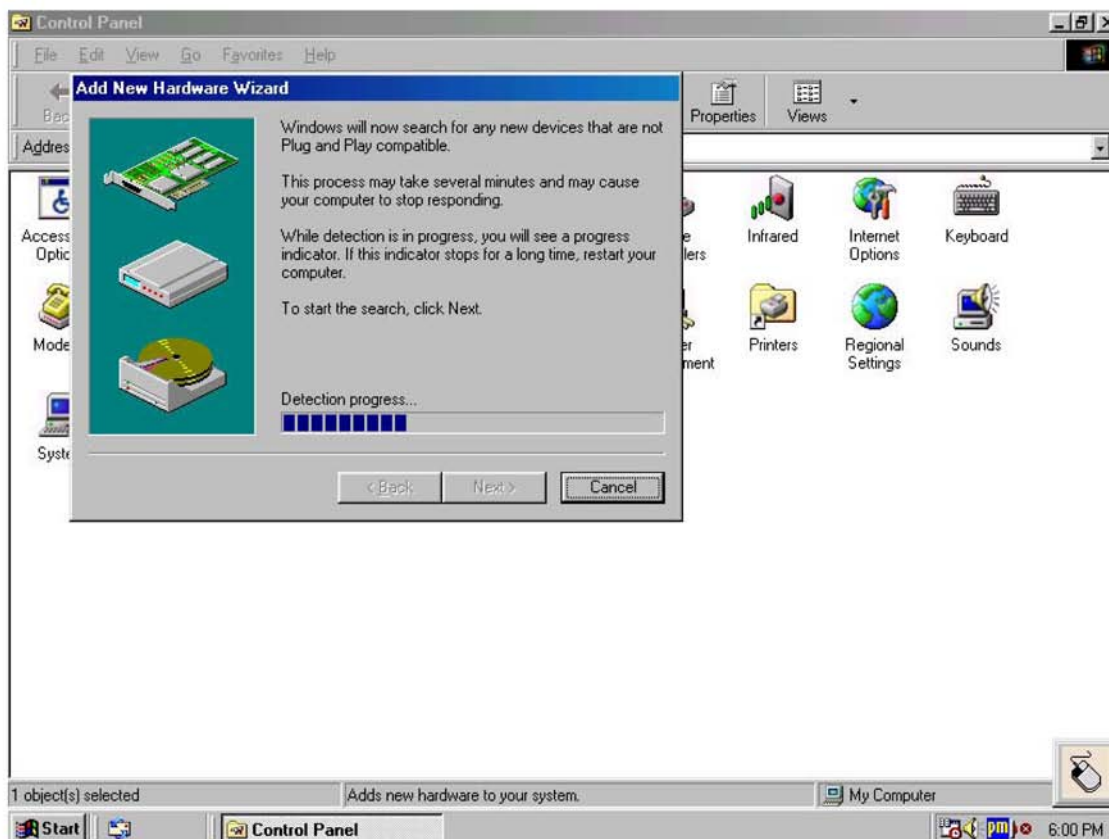
#4: GND

5. Installation

- a) Turn the PC power off.
- b) Connect the four pin power plug to the corresponding plug on the power cable supplied with JP-8005U USB
- c) Install the plate on the expansion slot of PC. Plug the JP-8005U USB power plug to the jack on the plate and connect USB cable to the USB port on PC.
- d) Connect cash drawer to JP-8005U USB
- e) Power on the PC. The LED on 8005U USB will light.
- f) After 3 seconds the LED will flash for normal operation.

6. JP-8005U USB Driver installations for Windows series OS

- 1). Download 8005U USB **Driver ZIP** files from driver CD title and extract JP-8005U driver to your hard disk.
- 2). When you plug in JP-8005U USB, Windows operating system will detect new hardware for USB.

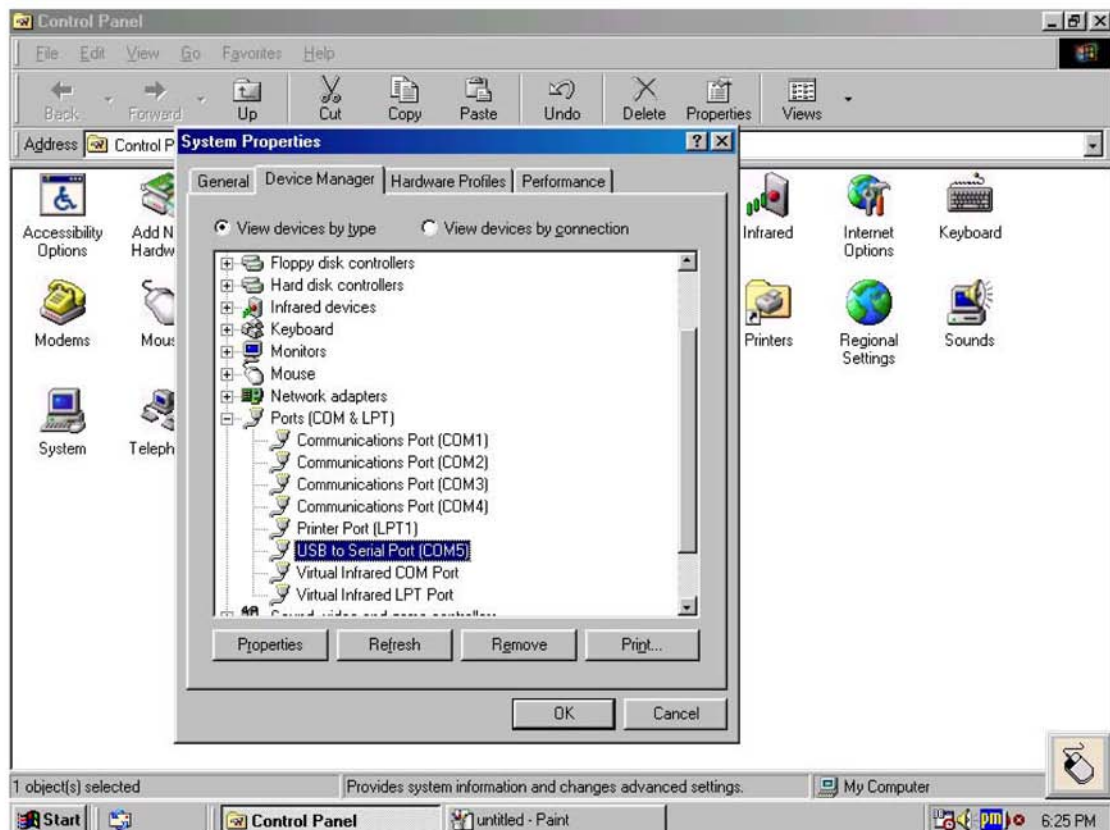




3). Follow indicated steps to give driver and finish the installation.

System will shared a simulated COM port for the 8005U USB cash drawer.

4). Check the resources form "Device management" in Windows "Control Panel"



7. How to drive the cash drawers:

Cash drawer 1 (marked CD1):

(A) Send any character to JP-8005U to open it (excepting [ESC] code); any characters means ASCII code from code 1 to code 255. Or refer to enclosed command set in the table.

(B) Send the block to JP-8005U with [ESC]+ [ASCII codes] to drive it. The [ASCII codes] please refer to enclosed command set.

Cash Drawer 2 (marked CD2):

Send the block to JP-8005U with [ESC]+ [ASCII codes] to drive it. The [ASCII codes] please refer to enclosed command set.

a) JP-8005U USB working:

When a correct command sends to JP-8005U USB, it will trigger the cash drawer and the LED will be turned on, then off, after 1 Seconds delay; the LED will be back to blinking for the next trigger.

Every ON/OFF designs for delay for 1 sec. to wait for next command.

2. Command set for 8005U USB

Data		Description
by Hex	By Dec	
0x34	52	Open Cash Drawer 1 (24v)
0x35	53	Open Cash Drawer 2 (24v)
0x3A	58	Detect Cash Drawer 1 sensor Return value: ESC+"4"+"A" means Drawer1 still closed. ESC+"4"+"B" means Drawer1 still opened.
0x3B	59	Detect Cash Drawer 2 sensor Return value: ESC+"5"+"A" means Drawer2 still closed. ESC+"5"+"B" means Drawer2 still opened.